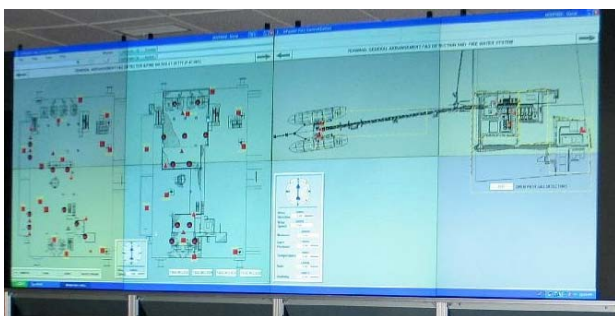


TELEPHONE LINE SUPERVISION UNIT "SUPERTEL-8/SET".



Model SUPERTEL-8/SET



Synoptic display panel

(Red dots are installed emergency evacuation telephones and will flash soon the corresponding handset has been lifted)

FEATURES AND BENIFITS

- Supervision of 8 analogue telephone lines against following faults:
 - Open line.
 - Short line.
 - Earth fault.
- Suitable for direct connection to any analogue telephone exchange.
- Provides one dry contact per line soon telephone "Off hook" has been detected for driving a synoptic panel display in case of use as emergency telephone system.
- Provides one dry contact per line soon fault has been detected.
- Expandable up to 640 lines by simply adding extra SUPERTEL-16 units.
- Self-monitoring against power shutdown.

The model SUPERTEL-8 is a DIN rail mounted supervision unit for analogue telephone lines. The SUPERTEL-8 provides supervision for open line, shorted line, and earth fault.

At the same time the unit provides per telephone line a dry "Off Hook" contact soon a telephone handset has been lifted off hook.

This contact may be used to display the position of the telephone caller on a synoptic panel in case of use as emergency evacuation communication system or disaster announcing system in order to pinpoint the position of the caller.

All lines are protected with lightning arrestors against damage of lightning storms.

The SUPERTEL-8 is an excellent choice for new or existing installations in order to assure the system is operational at all time.

The SUPERTEL-8/SET consist of 1 SUPERTEL-8 unit, 1 PS-CF unit (Power Supply/Common Fault) and 2 "Flat cable to Clip-On" terminal units.

Specifications.

Construction & Mounting	: Din rail PVC housing. Mounting on DIN rail with two (2) clips		
Power requirements	: 24VDC at 0,5A .		
Cabling	: Input : analogue a,b line from PABX.		
	: Outputs : 1) a',b' line max 1,5Km .2x2x0,8mm standard telephone cable.		
	2) "Off hook" dry contact per line max 90VAC/DC non inductive at 0,1A.		
	3) "Fault " dry contact per line max 90VAC/DC non inductive at 0,1A.		
	4) "Common Fault " dry contact max 90VAC/DC non inductive at 0,1A.		
Field connection	: screw and Clip-On terminal connection		
Diagnostic	: By means of LED. Power ON, OFF Hook, Fault, Common Fault.		
Temperature range	: Minus 10°C to +40°C. (20-80% humidity)		
Dimensions (WxHxD)	: Supertel-8: 165x85x60mm	PS-CF: 67x85x50mm	Fault/Off-hook unit: 50x45x50mm
Shipping weight	: 0,3Kg	0,1Kg	0,1Kg